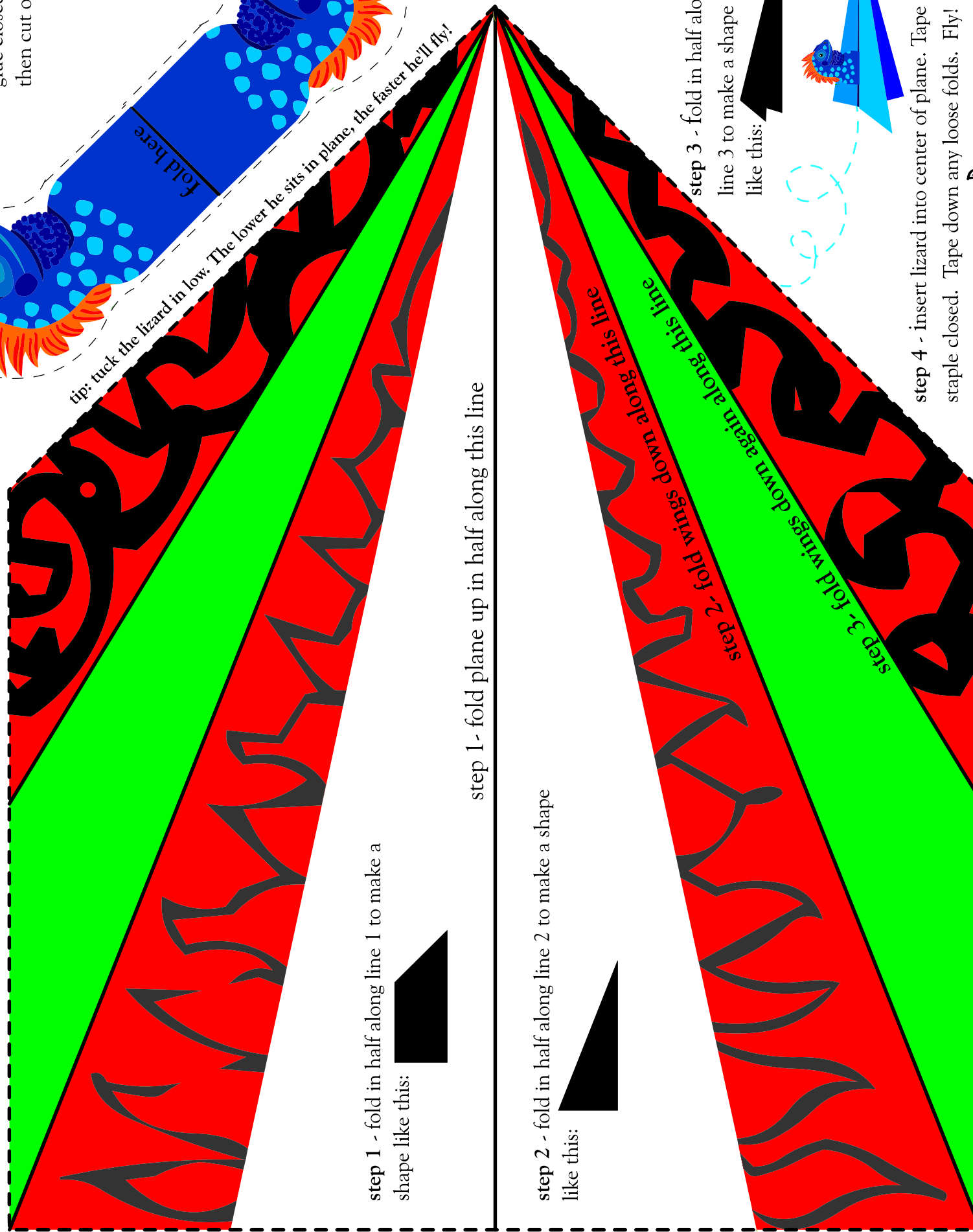
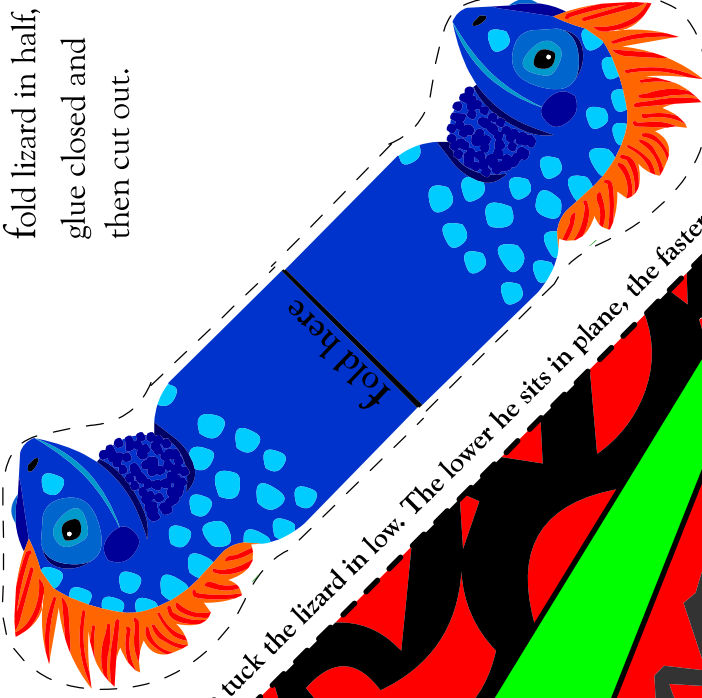
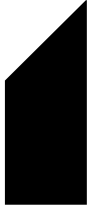


# FLYING LIZARD #3

fold lizard in half,  
glue closed and  
then cut out.



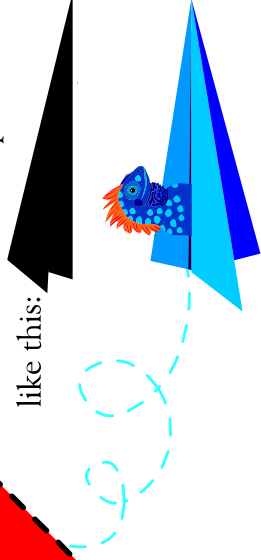
step 1 - fold in half along line 1 to make a shape like this:



step 2 - fold in half along line 2 to make a shape like this:



step 3 - fold in half along line 3 to make a shape like this:



step 4 - insert lizard into center of plane. Tape or staple closed. Tape down any loose folds. Fly!