

# St Aiden's Homeschool South Africa



## - awl & -awn Family Workbook Book 28

Name: \_\_\_\_\_

Date: \_\_\_\_\_



## -awl Family Word List

-awl  
bawl  
brawl  
crawl  
drawl  
shawl  
trawl

## -awn Family Word List

-awn  
brawn  
dawn  
drawn  
fawn  
pawn  
prawn  
sawn  
spawn  
withdrawn  
yawn



Colour the words. Can you write the word on the line?

bawl

---

---

---

crawl

---

---

---

drawl

---

---

---

shawl

---

---

---

trawl

---

---

---

brawl

---

---

---

brown

---

---

---

drawn

---

---

---

fawn

---

---

---

sawn

---

---

---

spawn

---

---

---

withdrawn

---

---

---

dawn

---

---

---

yawn

---

---

---

pawn

---

---

---

prawn

---

---

---

Trace over the words, then write the word on the lines

bawl

brawl

crawl

drawl

shawl

trawl

brown

drawn

fawn

sawn

spawn

withdrawn

dawn

---

---

---

yawn

---

---

---

pawn

---

---

---

prawn

---

---

---



Word Family Word Building Mat. How many other words can you think of? Write them in the spaces.

\_\_awl

\_\_awl

\_\_awl

\_\_awl

\_\_awl

\_\_awn

\_\_awn

\_\_awn

\_\_awn

\_\_awn





Print on cardstock. Cut out the tables. Laminate for protection. Cut out all smaller blocks. Match up single or double letters with the "word family" letters on the larger blocks. Encourage your child to sound the letters and then add it to the word family ending. Does it make a word she recognises? It would be fun to get your child to write the letters that get picked up and the words that are made on the next sheet of paper, or use the word building mat. Practice a few times over time and you will be amazed at how quickly the concept is picked up ☺

a	b	c	d	e
f	g	h	i	j
k	l	m	n	o
p	q	r	s	t
u	v	w	x	y
z	cr	st	sp	sl

_____awl	_____awn
----------	----------



Family Worksheet Mat



We are working on the word family that ends in  
**-awl -awn**

\_\_\_\_\_ awl

\_\_\_\_\_ awl

\_\_\_\_\_ awl

\_\_\_\_\_ awl

\_\_\_\_\_ awn

\_\_\_\_\_ awn

\_\_\_\_\_ awn

\_\_\_\_\_ awn

\_\_\_\_\_ awn

a	br
b	ch
c	cr
d	dr
e	fr
f	gr
g	pr
h	qu
i	sh
j	sl
k	sn
l	st
m	tr
n	wh
o	cl
p	str
q	wr
r	fl
s	bl
t	
u	
v	
w	
x	
y	
z	



Word Wall. Print on cardstock and laminate for protection.  
Cut out word slides for word wall.

bawl

brawl

crawl

drawl

shawl

trawl

brawn

fawn

drawn

sawn

pawn

prawn

withdrawn

spawn

yawn

dawn

Flash Cards. Print on cardstock and laminate for protection.  
Cut out flat cards for sight words.

bawl

brawl

crawl

drawl

shawl

trawl

Flash Cards. Print on cardstock and laminate for protection.  
Cut out flat cards for sight words.

brawn

drawn

fawn

sawn

spawn

withdrawn

Flash Cards. Print on cardstock and laminate for protection.  
Cut out flat cards for sight words.

yawn

dawn

pawn

prawn

**b**

**br**

**cr**

**d**

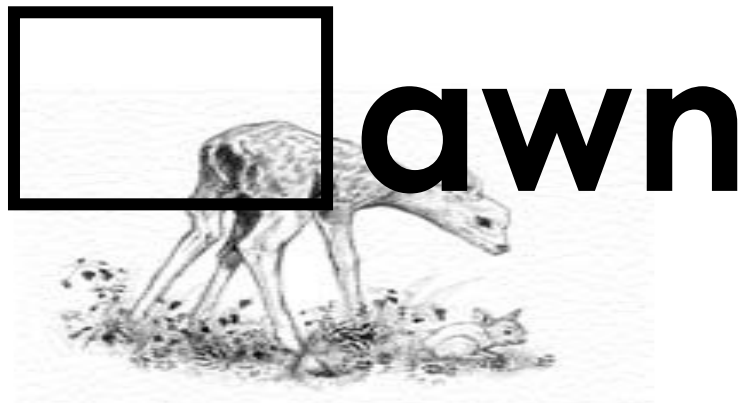
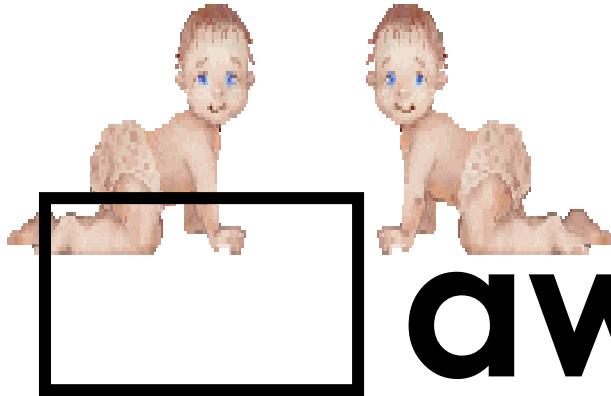
**dr**

**f**

**s**

**sh**

**tr**



-awl & -awn Family Word Slide  
(Sound Blending)

Print on cardstock, cut and laminate for durability. Slit the top and bottom of the box on the picture for the onset slide. Thread the letter slide through the slits in the box. Match letters with word family to make recognisable words.

Example: /d/ /awn dawn

*Credits: This slide activity model was inspired by phonics genius Cherry Carl and has been adapted for our workbooks. Thank you.*

Circle the correct word for the picture. Write the word on the lines.



crawl / crow

---

---

---



drool / drawl

---

---

---



bawl / ball

---

---

---



bawl / brawl

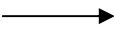
---

---

---

Circle the correct word for the picture. Write the word on the lines.

drawn



drawn / drown

\_\_\_\_\_

-----

\_\_\_\_\_

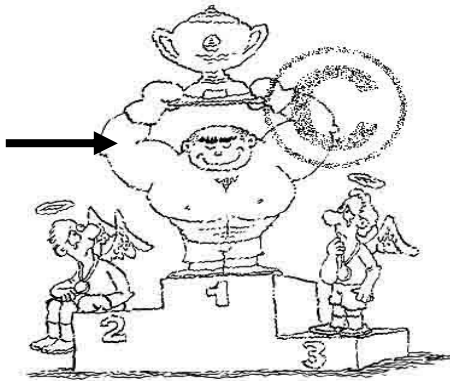


shawl / shoal

\_\_\_\_\_

-----

\_\_\_\_\_

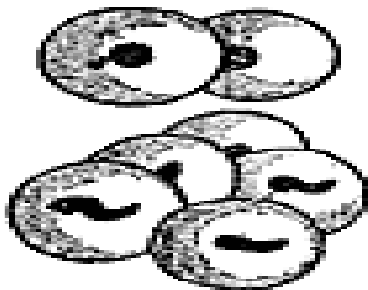


brain / brawn

\_\_\_\_\_

-----

\_\_\_\_\_



spoon / spawn

\_\_\_\_\_

-----

\_\_\_\_\_

Circle the correct word for the picture. Write the word on the lines.



spawn / sawn

\_\_\_\_\_

-----

\_\_\_\_\_



troll / trawl

\_\_\_\_\_

-----

\_\_\_\_\_



fawn / flown

\_\_\_\_\_

-----

\_\_\_\_\_



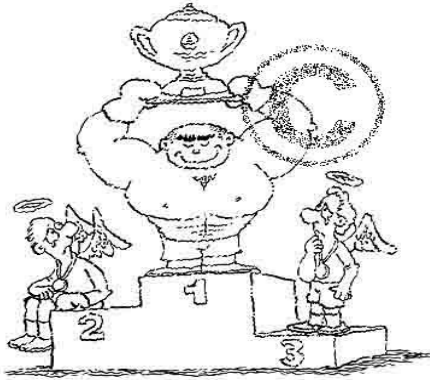
dawn / drawn

\_\_\_\_\_

-----

\_\_\_\_\_

Write the correct word for the picture.



---

---

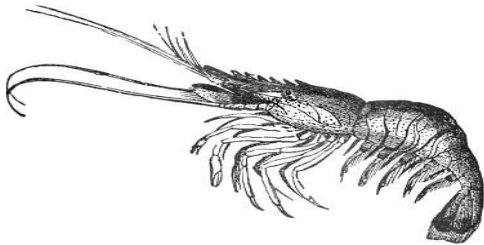
---



---

---

---



---

---

---



---

---

---

# Wordsearch



Find and circle all of the words from the word bank. The words can go across, down or diagonally.

b	d	d	g	h	y	b	a	y	a	w	n
a	e	r	p	k	s	r	b	s	a	w	u
w	y	m	a	g	c	a	b	s	f	d	g
l	o	g	b	w	m	w	w	g	d	r	j
a	d	m	w	b	n	n	r	j	u	a	t
s	z	x	q	b	h	d	a	w	n	w	r
b	r	a	w	l	q	e	d	c	h	l	a
c	s	a	w	n	q	v	t	p	p	k	w
g	h	f	a	w	n	c	r	a	w	l	l
s	p	a	w	n	q	j	k	v	s	z	k
z	d	r	w	i	t	h	d	r	a	w	n

bawl      brawl      brawn      crawl      drawl  
fawn      drawn      sawn      dawn      spawn  
withdrawn      yawn      trawl

## Close the Gap!



Read the sentences below. Fill in the missing word. Choose only words from the word box on this page.

1. Frog \_\_\_\_\_ hatches little tadpoles.
2. The sun was rising. It was \_\_\_\_\_.
3. A shrimp looks like a baby \_\_\_\_\_.
4. The fisherman were going out to sea on their fishing \_\_\_\_\_.
5. The trunk of the tree had been \_\_\_\_\_.
6. A \_\_\_\_\_ is one of the smaller chess pieces.
7. A \_\_\_\_\_ is a baby deer.
8. Babies learn to \_\_\_\_\_ before they can walk.

bawl	brawl	brawn	crawl	drawl
fawn	drawn	sawn	dawn	spawn
withdrawn	yawn	trawl	prawn	pawn

## Word Unscramble!



Read the words in the first column below. Write the correct words on the lines. Choose only words from the word box on this page.

wlrat	<hr/> <hr/> <hr/>
hswal	<hr/> <hr/> <hr/>
wnas	<hr/> <hr/> <hr/>
nwya	<hr/> <hr/> <hr/>
pswna	<hr/> <hr/> <hr/>

## Word Order!



Read the words in the word bank below. Write the words on the lines in alphabetical order.

trawl   dawn   yawn   sawn  
brawl   fawn   brawn   shawl

1 _____ ----- _____	2 _____ ----- _____
3 _____ ----- _____	4 _____ ----- _____
5 _____ ----- _____	6 _____ ----- _____
7 _____ ----- _____	8 _____ ----- _____



Say the name of the picture. If it ends in the same sound as these word families, put a circle around it. If it has a different sound put a cross through the picture.



Write your own sentences using the one word from the word bank in each sentence.

bawl	brawl	brawn	crawl	drawl
fawn	drawn	sawn	dawn	spawn
withdrawn	yawn	trawl	pawn	prawn

Handwriting practice lines consisting of solid top and bottom lines with a dashed middle line. There are ten sets of these lines provided for writing sentences.



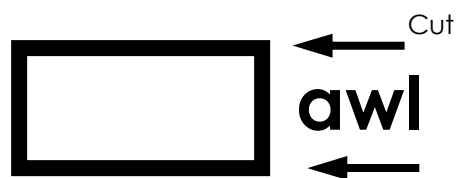
Handwriting practice lines consisting of solid top and bottom lines with a dashed middle line. There are 10 such sets of lines arranged vertically down the page.



Handwriting practice lines consisting of solid top and bottom lines with a dashed middle line, repeated 10 times down the page.

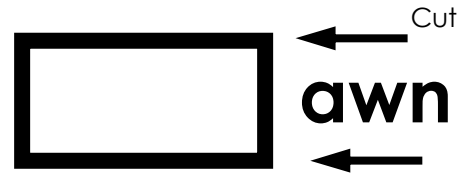
Print on Cardstock. Cut out the strips with letters and blends. Cut slits in the box and thread the letter slides through. Make as many words as you can with the letters and blends. Write them on a sheet of paper.

a	h	sl	str
b	i	st	dr
bl	j	sc	be
br	k	t	
c	l	th	
ch	m	tr	
cr	n	u	
d	o	v	
dr	p	w	
e	pl	wr	
f	pr	wh	
fl	qu	x	
fr	r	y	
g	s	z	
gr	sh	gl	



Print on Cardstock. Cut out the strips with letters and blends. Cut slits in the box and thread the letter slides through. Make as many words as you can with the letters and blends. Write them on a sheet of paper.

a	h	sl	str
b	i	st	dr
bl	j	sc	be
br	k	t	
c	l	th	
ch	m	tr	
cr	n	u	
d	o	v	
dr	p	w	
e	pl	wr	
f	pr	wh	
fl	qu	x	
fr	r	y	
g	s	z	
gr	sh	gl	





Draw or cut out and paste pictures of items that have the same sound as this family. Write the word below your picture.

<hr/> <hr/> <hr/>	<hr/> <hr/> <hr/>
<hr/> <hr/> <hr/>	<hr/> <hr/> <hr/>
<hr/> <hr/> <hr/>	<hr/> <hr/> <hr/>

# The End

We would love to hear your comments on this workbook. If you have a moment please email your comments and suggestions to [feedback@staidenshomeschool.com](mailto:feedback@staidenshomeschool.com)

## Other Volumes In Our Series Of Workbooks

AFRICA  
ALPHABET, VOWELS & CONSONANTS  
ANIMALS  
COLOURS, SHAPES, PUZZLES  
DOLCH WORDS  
GEOGRAPHY  
HISTORY  
NATURE  
NUMBERS  
READING  
WORD FAMILIES  
WRITING

This unit is provided free of charge by St Aiden's Homeschool, South Africa, for personal and classroom use in the interests of furthering home education in Africa and internationally. Please feel free to share it with family, friends and students in its entirety, without addition, amendment or omission. This unit may NOT be sold under any circumstances. Thank you for respecting international copyright laws.

I would like to acknowledge, with deep respect and grateful thanks, the work, assistance and guidance of Cherry Carl, USA, who has been a great inspiration to me and thousands of homeschooling parents like myself. A variety of clipart resources have been used, most notably Microsoft Clipart Collections, FG-A, Wikipedia, Wiki-Know, [www.keltawebconcepts.com.au](http://www.keltawebconcepts.com.au) and Free Classroom Clipart.

Donnette E Davis

© 2007 St Aiden's Homeschool, Republic of South Africa

Dates of publications: November 10 2007

Filename: awl & awn  
Directory: C:\Documents and Settings\DONNETTE DAVIS\My Documents\our books\word family workbooks\a family  
Template: C:\Documents and Settings\DONNETTE DAVIS\Application Data\Microsoft\Templates\Normal.dot  
Title: St Aiden's Homeschool  
Subject:  
Author: DONNETTE DAVIS  
Keywords:  
Comments:  
Creation Date: 11/11/2007 8:10:00 AM  
Change Number: 2  
Last Saved On: 11/11/2007 8:10:00 AM  
Last Saved By: DONNETTE DAVIS  
Total Editing Time: 1 Minute  
Last Printed On: 11/11/2007 8:10:00 AM  
As of Last Complete Printing  
Number of Pages: 34  
Number of Words: 2,235 (approx.)  
Number of Characters: 12,744 (approx.)